



# FOTON GENUINE PARTS



Visit our official website:  
[www.foton-global.com](http://www.foton-global.com)

Foton Motor Group  
Foton International  
China · Beijing 102206

All rights reserved.  
All the information and figures included in this brochure are just for reference.  
FOTON MOTOR GROUP holds the right of final interpretation and modification of this brochure.



FOTON  
GENUINE  
PARTS

The  
Extreme  
Ingenuity Of Manufacturing,  
Quality Trustworthy

# COMPANY PROFILE



Founded in 1996, Foton Motor Group was listed on the Shanghai Exchange Stock in 1998 with stock code 600166. As a mixed ownership enterprise with relative state-own holding, Foton has 40000 employees and is becoming one of the leading international suppliers of commercial vehicles.

Foton has a business brand of Auman, AUV, Aumark, Tunland, Sauvana, Toano, View, Gratour, Ioxa and so on, which comprehensively covers commercial vehicles, passenger vehicles and related industries, being the commercial vehicle enterprise with the most complete service class in the world.

## After-sales Service



### We provide all the official Foton genuine parts for Foton "Total care" service

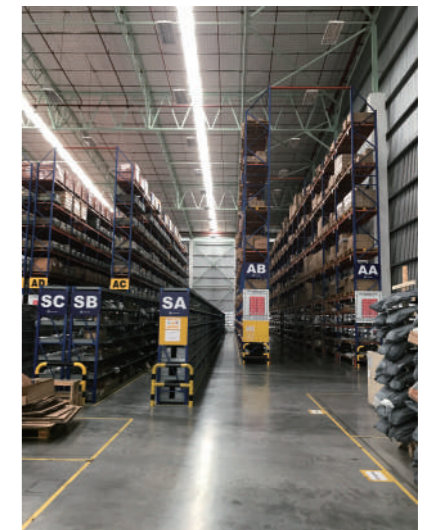
We rely on the worldwide distribution network to Foton "Total Care" service standards, products, service training, technical support, and other accessories to provide users with full service construction by providing services to an authorized dealer. To make the service process standardization, Foton has launched "Total Care" service, relying on a global call centers, global parts logistics center, worldwide professional service technicians, and establish efficient response and feedback mechanisms to provide full global users care services.

In order to ensure the safe running of your vehicle and prolong its service life, please use original Foton genuine parts.

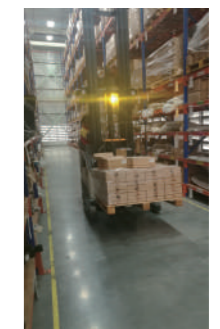
Foton's authorized global dealers have trained technicians and specialist diagnostic instruments and repair equipment, and are able to offer a top quality service for the entire Foton product range.

## CDC Global Logistics Auto Parts Center

Foton Motor in North China, Central China and in southern China has established three major parts logistics center, covering nearly 400 acres, the total investment of more than 1.5 billion, and through the use of elevated three-dimensional warehouse, modern equipment, the use of world-class warehousing management information system, bar code Reading technology combined with PDA mobile terminals, etc., to achieve a high degree of information warehousing management of information, and has been in Thailand, Russia, Australia, Kenya and other countries to establish a distribution center.



Foton Motor genuine parts, from research and development, supply and maintenance system to guarantee the full range of services to "genuine parts, Total care" for the purpose, tightly controlled service centers around the use of genuine parts, which have been to ensure that every Strict installation matching test, quality certification and careful screening, full coverage Foton all models of parts types, to create efficient distribution network, so that no breakpoint supply, so that Foton owners immediately get safe and reliable accessory services, but also to ensure that the Foton owner's after-sale rights, Worry-free quality, rest assured that smooth.





## ENGINE



Foton diesel filter

Part No:WBF1212

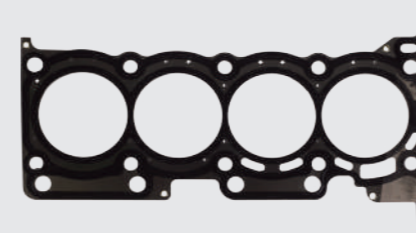
Applicable Models:View/Tunland/Aumark



4G69 Oil filter

Part No:SMD360935V

Applicable Models:View/Gratour



Cylinder head assembly

Part No:LJ469QE2-1003400

Applicable models:Gratour



Cummins ISF3.8 Injector

Part No:5296723

Applicable models:View/Aumark



Cummins piston and ring assembly

Part No:3697230

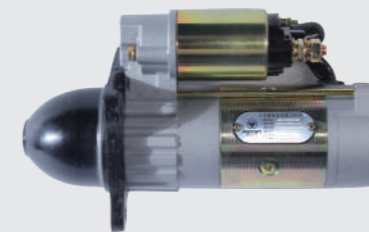
Applicable models:Auman



Cummins ISF3.8 piston pin ring

Part No:3920691

Applicable Models:View/Aumark



Deceleration starter

Part No:QDJ2509B

Applicable models:Auman



Cummins ISF2.8/3.8 pumps

Part No:5333148

Applicable models:View/Tunland/Aumark



Cummins ISF2.8 piston pin

Part No:wbf1212

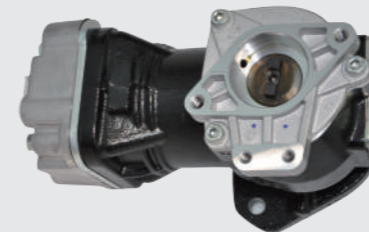
Applicable models:View/Tunland/Aumark



Cummins connecting rod

Part No:4083569

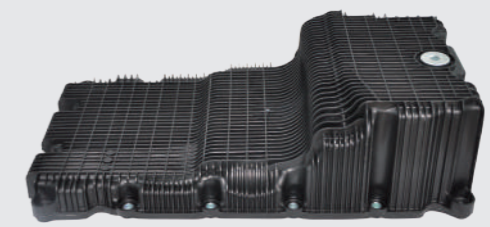
Applicable models:Auman



Cummins ISF3.8 air compressor

Part No:4932265

Applicable models:View/Aumark



Cummins ISF2.8 oil pan assembly

Part No:5302123

Applicable models:View/Aumark



## CHASSIS



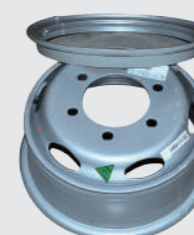
Clutch pressure plate assembly  
Part No:E04930800027  
Applicable models:View/Tunland/Aumark



Foton driven plate assembly  
Part No:L0161030102A0  
Applicable models:Aumark



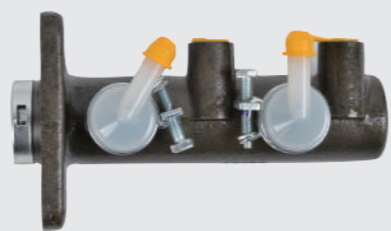
Shift gear sub-assembly  
Part No:47-60-648-001  
Applicable models:Tunland



Rim assembly (silver gray)  
Part No:1104931100031A0  
Applicable models:Aumark



Transmission shaft universal joint  
Part No:1653622000011Y1  
Applicable models:View



Brake master cylinder assembly  
Part No:1104935500071  
Applicable models:Aumark



Foton hand brake cable assembly  
Part No:1102935700004  
Applicable Models:Aumark



Engine front suspension cushion assembly  
Part No:1105110100008  
Applicable models:Aumark



Steering column assembly  
Part No:C4342060001A0  
Applicable models:View



oil tank assembly,steering system  
Part No:1105134000022  
Applicable Models:Aumark



Turned to tank assembly  
Part No:1105134000022  
Applicable Models:Aumark



Foton electronic accelerator pedal bracket  
Part No:1105911700003  
Applicable Models:Aumark



## AXLE TRANSMISSION



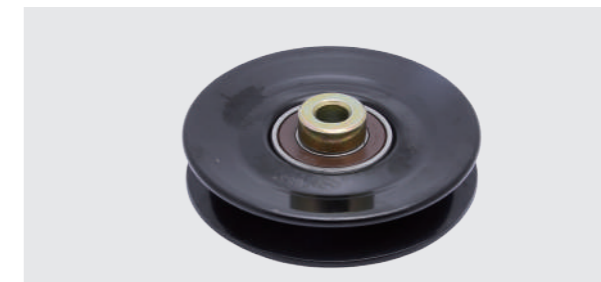
Rear axle parking brake shoe  
Part No:P1117030007A0  
Applicable models:Tunland



Front brake disc  
Part No:1647630000021  
Applicable models:View



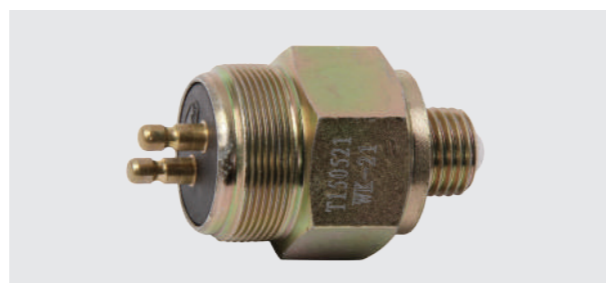
Cummins ISF2.8 flywheel  
Part No:5253213  
Applicable models:View/Aumark/Tunland



Taut wheel assembly  
Part No:1B16981200010  
Applicable models:View/Aumark



Brake cylinder (right) II  
Part No:1105930000004-03-2  
Applicable models:Aumark



Reverse switch assembly  
Part No:WK-21  
Applicable Models:Aumark



6T100-06A-00 3rd/4th gear synchronizer assembly  
Part No:5T92-3360  
Applicable models:Aumark



4th gear, countershaft  
Part No:JC528T6-1701443  
Applicable Models:Aumark



Separation fork  
Part No:5DYL1-1601015  
Applicable Models:View/Tunland



Input shaft and joint tooth ring component  
Part No:5MTI280N-1701110-AB  
Applicable models:Aumark



Planetary gears  
Part No:6480-2403013  
Applicable models:View/Tunland



Treadmill range gear spacer spacer  
Part No:5MTI280N-1701361-AA  
Applicable models:Aumark



## ELECTRICAL APPLIANCES



Dangerous alarm switch  
Part No:1B18037300025  
Applicable models:Aumark



AC switch  
Part No:1B18081100176  
Applicable models:View/Aumark



Big relay  
Part No:1104936630013  
Applicable models:Aumark



ECU assembly  
Part No:C3100220104A0  
Applicable models:Gratour



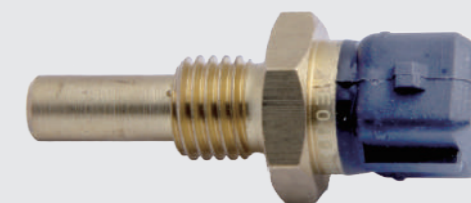
Brake light switch  
Part No:1D16937300077  
Applicable models:View, Tunland, Aumark



Brake light switch assembly  
Part No:C3373060001A0  
Applicable models:View



Battery  
Part No:1110836100001  
Applicable models:View/Aumark



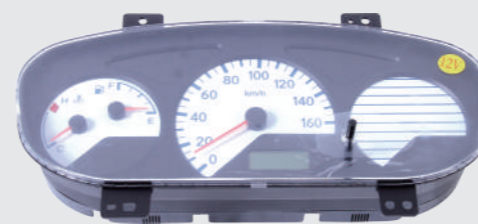
Ambient temperature sensor  
Part No:E049366000111  
Applicable models:View/Tunland



Speaker assembly  
Part No:1B18079100017  
Applicable Models:Aumark



Tweeter  
Part No:P1377010004A0  
Applicable models:View/Tunland/Aumark



Combination instrument assembly  
Part No:1B17037620001  
Applicable Models:Aumark



Right front light assembly  
Part No:1B18037150012  
Applicable Models:Aumark

## VEHICLE CAB



Left scraping arm scraping sub-assembly  
Part No:L0525010041A0  
Applicable models:Aumark



Side mirror assembly  
Part No:L0821030006A0  
Applicable models:Aumark



Wiper motor assembly  
Part No:1B20052500211  
Applicable models:Aumark



6486 (6 people) driver puller  
Part No:1K16968100032Y1  
Applicable Models:View



Dark gray right front door buttoned assembly  
Part No:1K18061500182  
Applicable models:View



Foton cab with interior trim  
Part No:5049XXY00-AAD0141E  
Applicable models:Aumark